



COASTAL  
CLASSIC  
RAILINGS

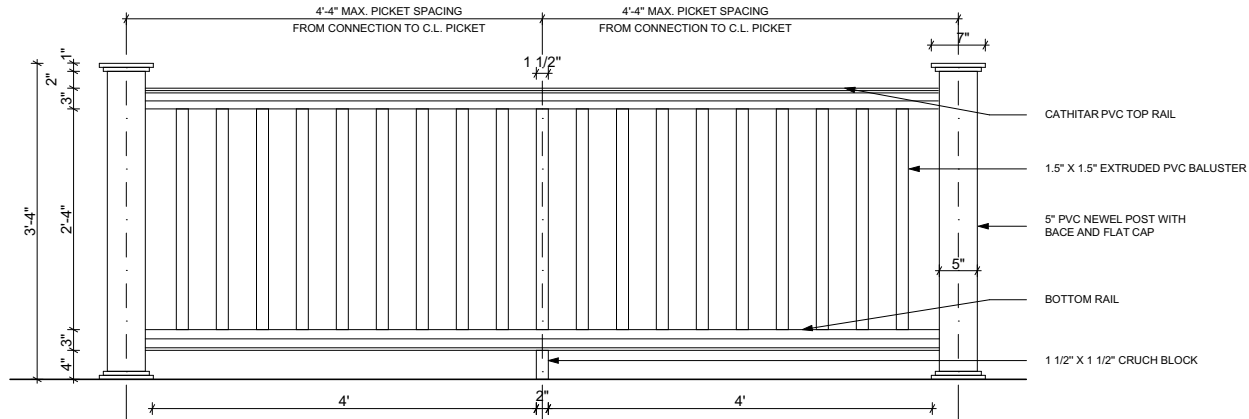
<https://coastalclassicroailings.com>



# TRADEMARK PVC RAILINGS

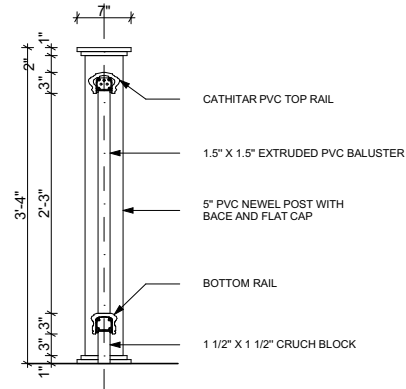
## RAILING DETAIL- ELEVATION

SCALE 1/2" = 1'0"



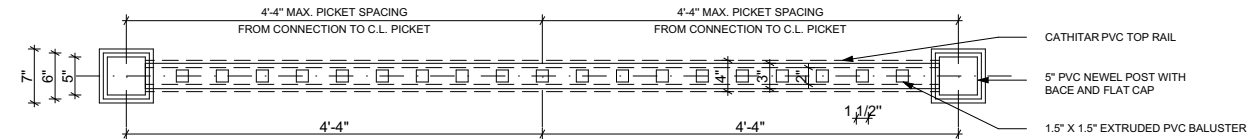
## RAILING DETAIL- SECTION

SCALE 1/2" = 1'0"



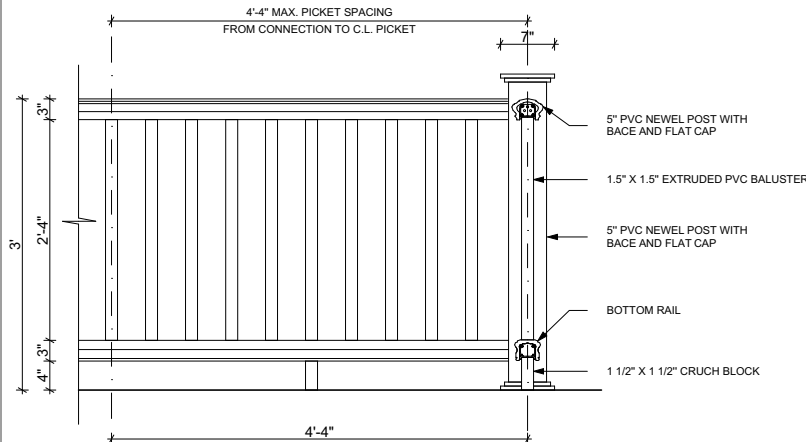
## RAILING DETAIL- PLAN

SCALE 1/2" = 1'0"



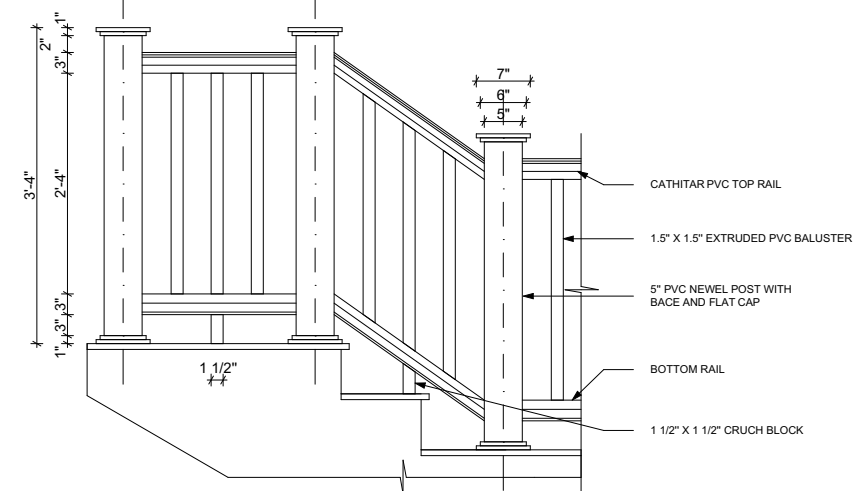
## PVC POST CORNER SECTION- ELEVATION

SCALE 1/2" = 1'0"



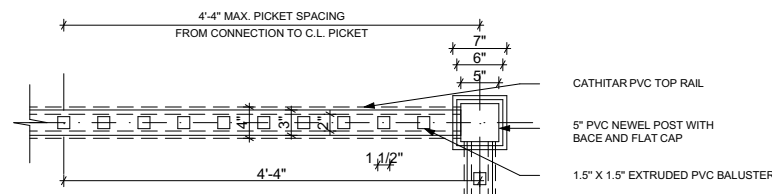
## SINGLE POST- ELEVATION

SCALE 1/2" = 1'0"



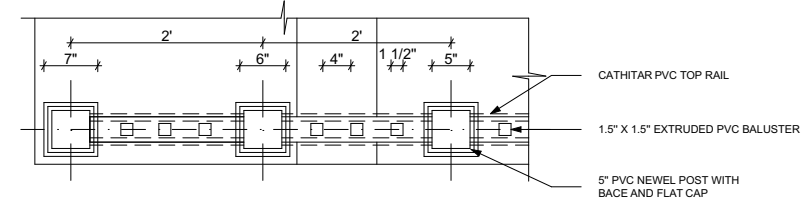
## PVC POST CORNER SECTION- PLAN

SCALE 1/2" = 1'0"



## SINGLE POST- PLAN

SCALE 1/2" = 1'0"





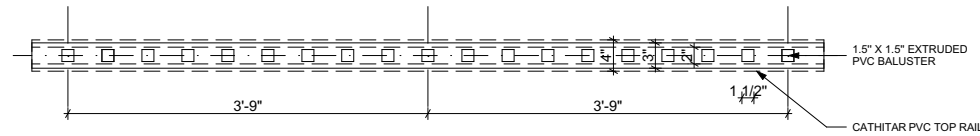
COASTAL  
CLASSIC  
RAILINGS

<https://coastalclassicroailings.com>

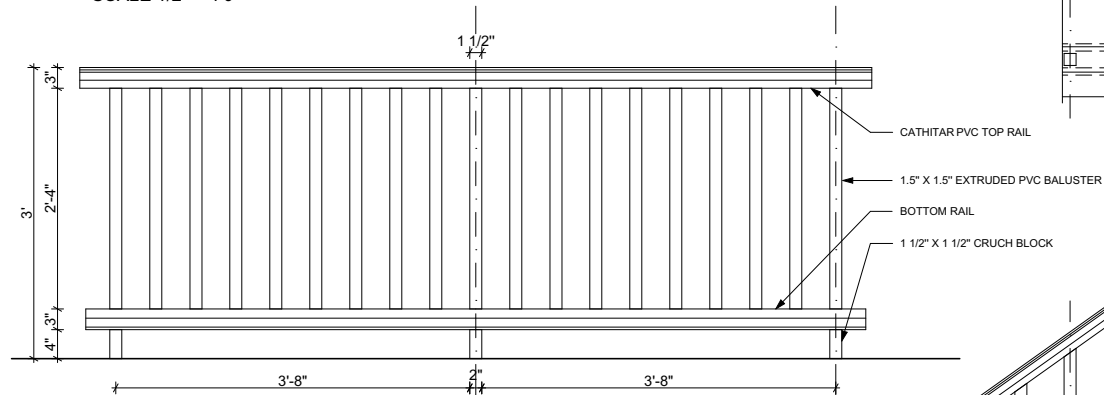


# TRADEMARK PVC RAILINGS

**RAILING DETAIL- PLAN**  
SCALE 1/2" = 1'0"

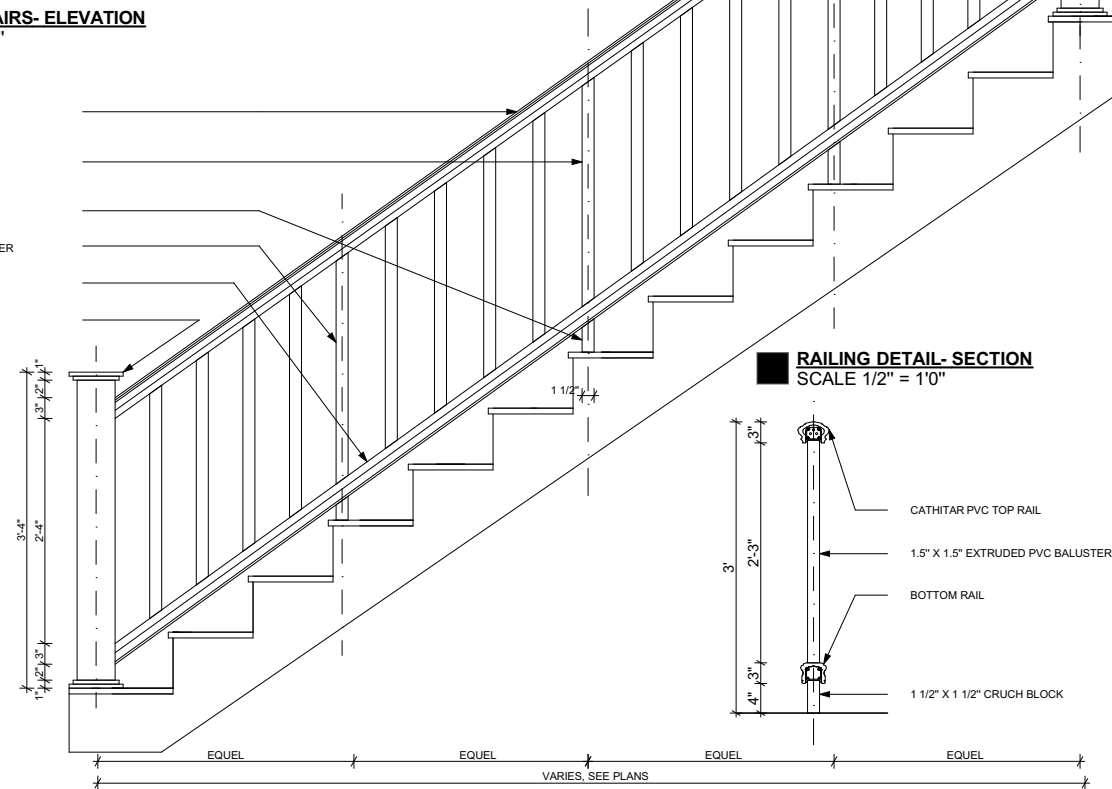


**RAILING DETAIL- ELEVATION**  
SCALE 1/2" = 1'0"

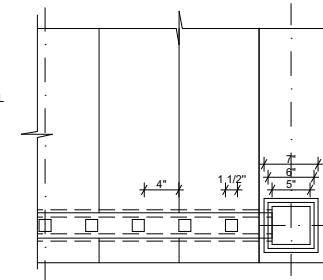


**RAILING ON STAIRS- ELEVATION**  
SCALE 1/2" = 1'0"

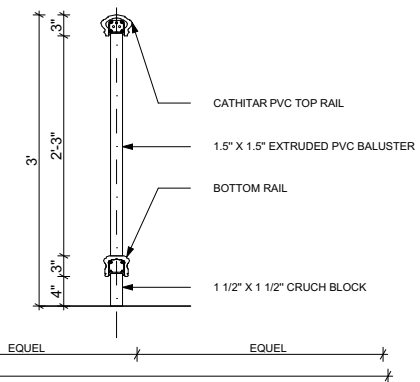
CATHITAR PVC TOP RAIL  
4" BALUSTER BETWEEN TOP RAIL AND SUB RAIL  
1 1/2" X 1 1/2" CRUCH BLOCK  
1.5" X 1.5" EXTRUDED PVC BALUSTER  
BOTTOM RAIL  
5" PVC NEWEL POST WITH BASE AND FLAT CAP



**RAILING ON STAIRS- PLAN**  
SCALE 1/2" = 1'0"

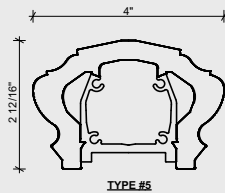
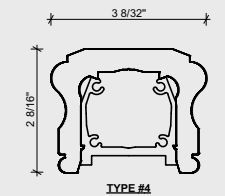
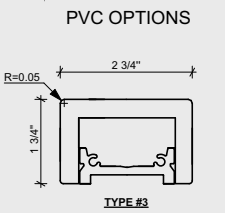
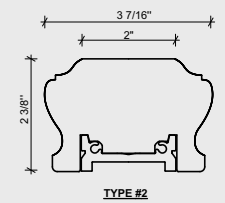
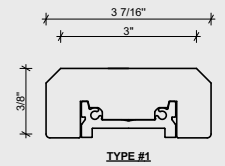


**RAILING DETAIL- SECTION**  
SCALE 1/2" = 1'0"

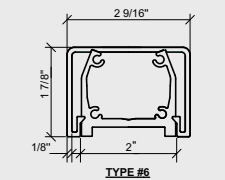


**6 TYPES OF HAND RAIL**  
SCALE 3" = 1'0"

STOCK WOOD OPTIONS  
(CEDAR, MAHOGANY,  
IPE, TEAK, WHITE OAK)



ALUMINUM FLAT CAP OPTION





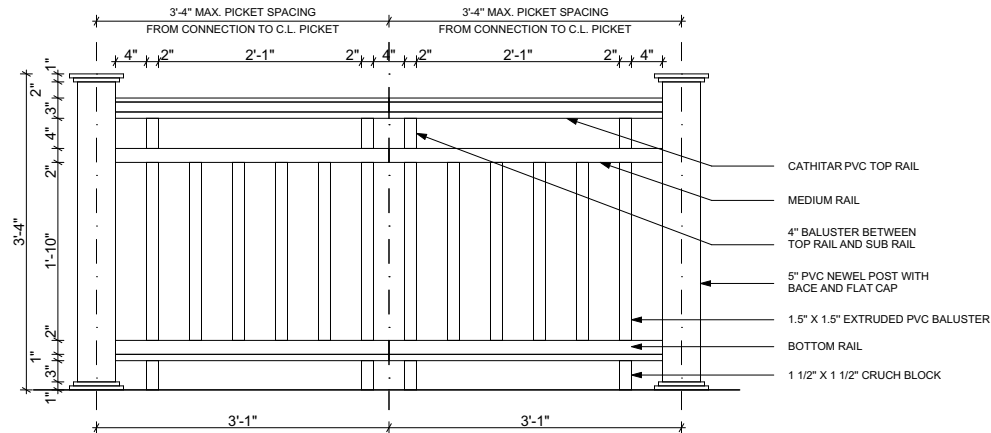
COASTAL  
CLASSIC  
RAILINGS

<https://coastalclassicroailings.com>



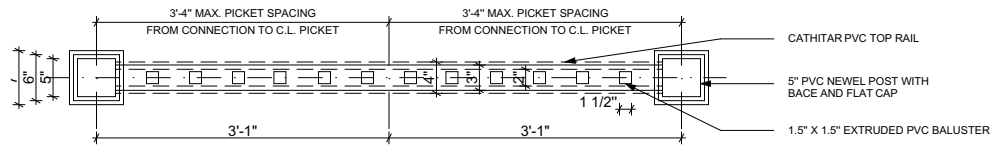
### RAILING DETAIL- ELEVATION

SCALE 1/2" = 1'0"



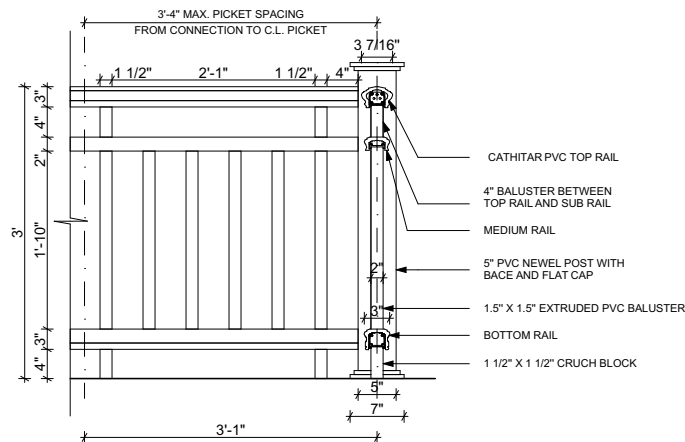
### RAILING DETAIL- PLAN

SCALE 1/2" = 1'0"



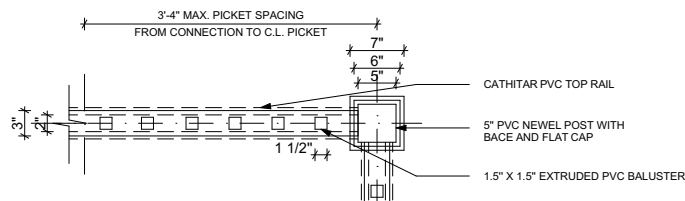
### PVC POST CORNER SECTION- ELEVATION

SCALE 1/2" = 1'0"



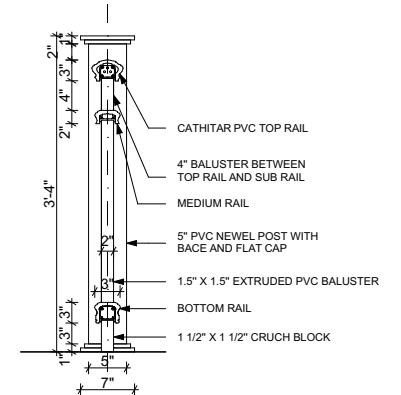
### PVC POST CORNER SECTION- PLAN

SCALE 1/2" = 1'0"



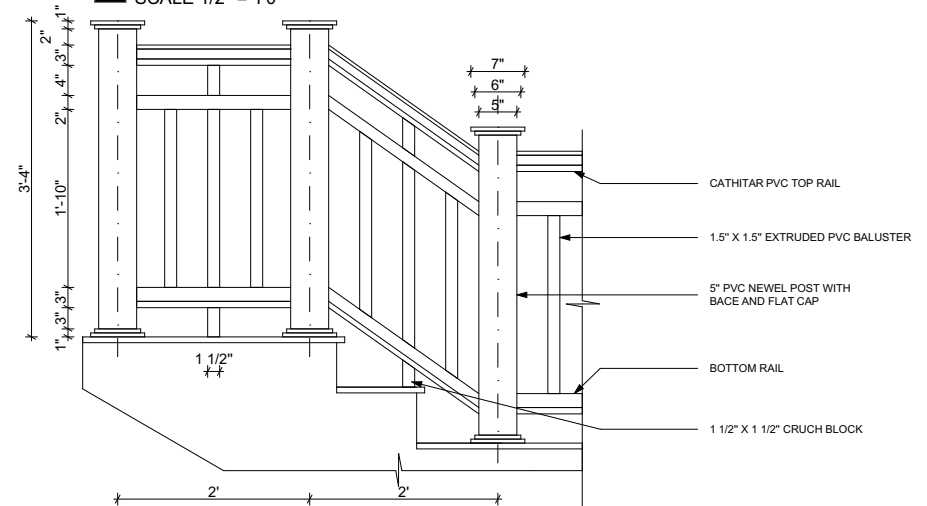
### RAILING DETAIL- SECTION

SCALE 1/2" = 1'0"



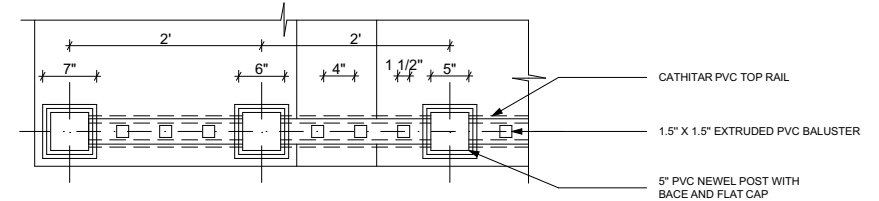
### SINGLE POST- ELEVATION

SCALE 1/2" = 1'0"



### SINGLE POST- PLAN

SCALE 1/2" = 1'0"





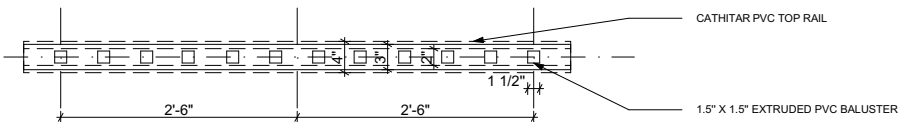
<https://coastalclassicrailings.com>



# TRADEMARK PVC RAILINGS

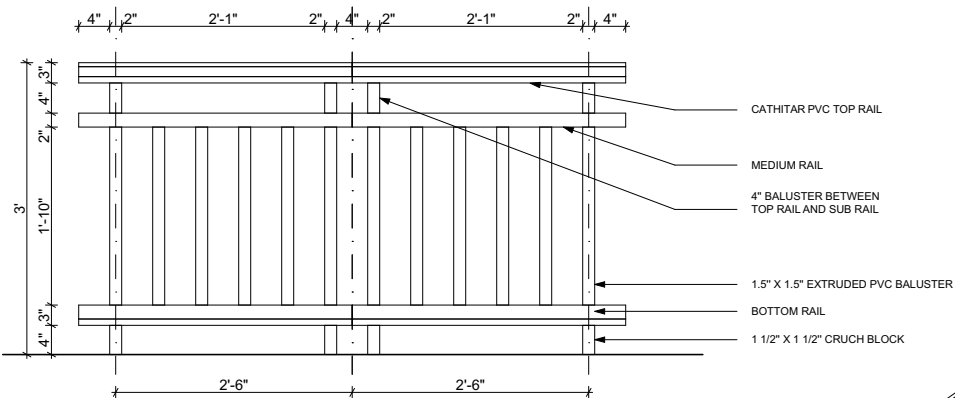
SCALE 1/2" = 1'0"

SCALE 1/2" = 1'0"



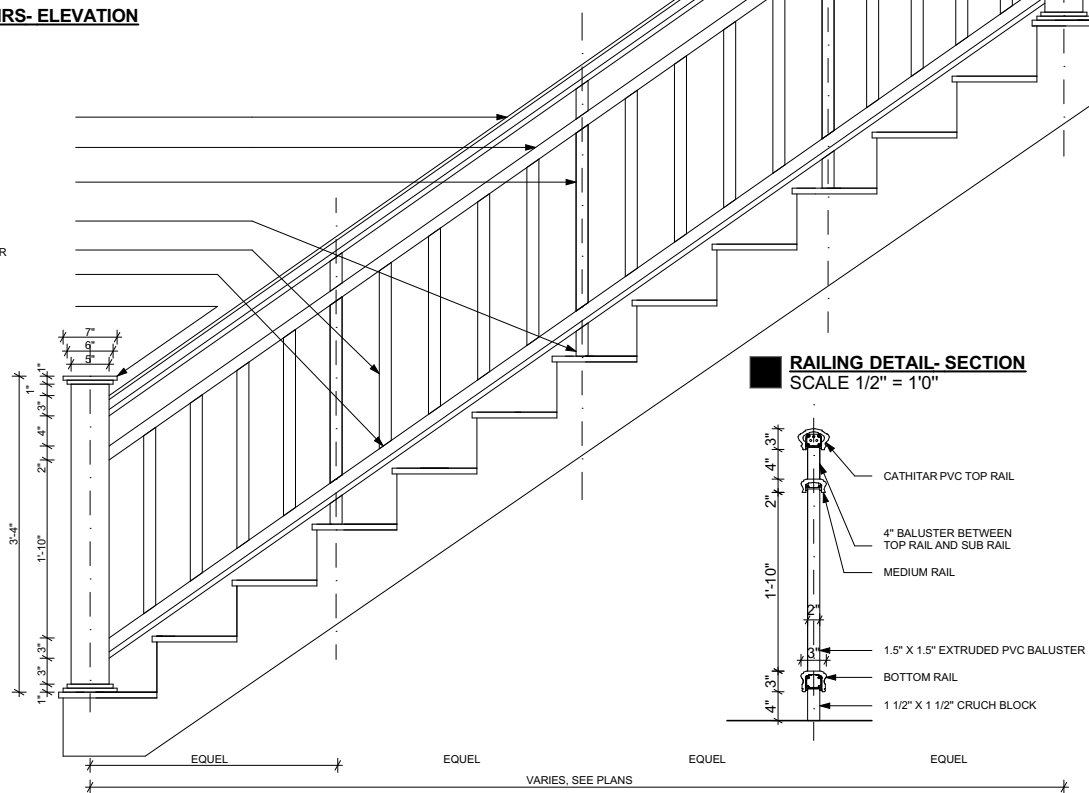
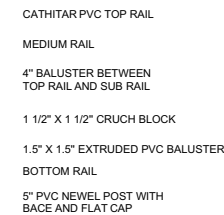
SCALE 1/2" = 1'0"

SCALE 1/2" = 1'0"



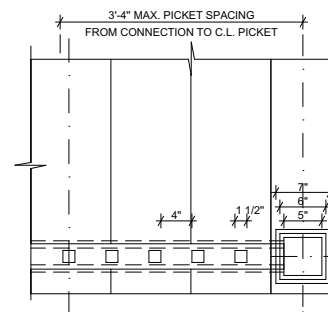
SCALE 1/2" = 1'0"

SCALE 1/2" = 1'0"



SCALE 1/2" = 1'0"

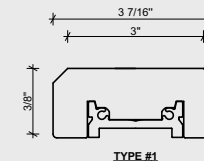
SCALE 1/2" = 1'0"



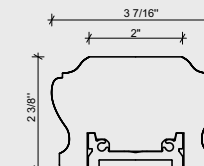
SCALE 3" = 1'0"

SCALE 3" = 1'0"

STOCK WOOD OPTIONS  
(CEDAR, MAHOGANY,  
IPE, TEAK, WHITE OAK)

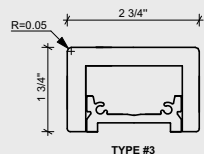


**TYPE #1**

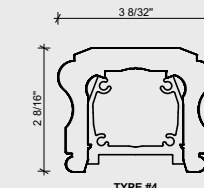


TYPE #2

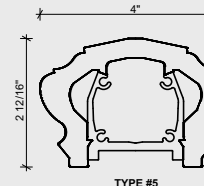
## PVC OPTIONS



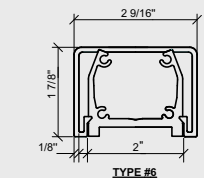
**TYPE #3**



**TYPE #4**



TYPE #5

ALUMINUM FLAT  
CAP OPTION

TYPE #6