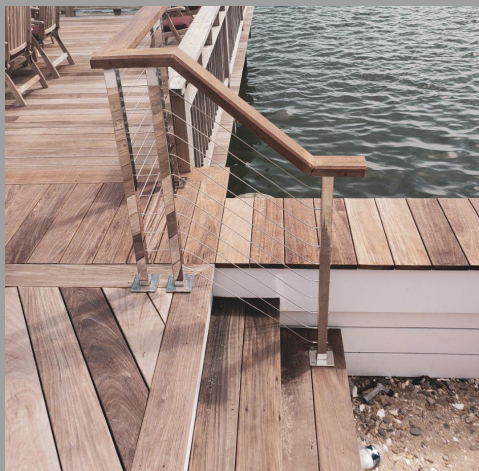
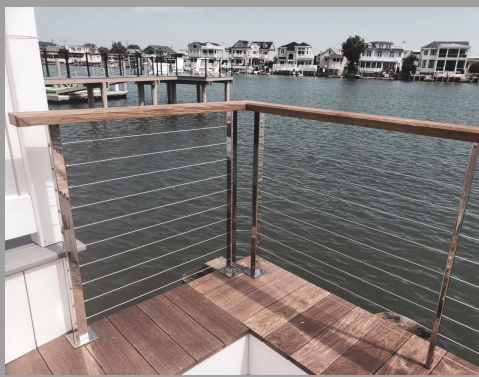
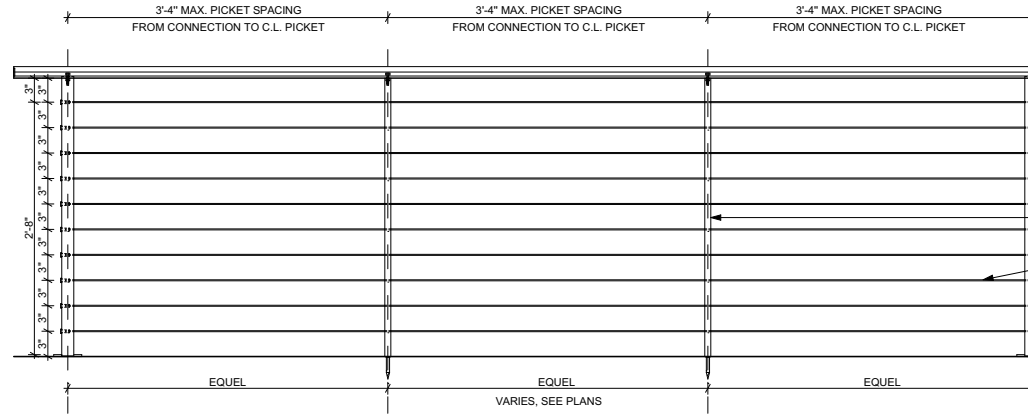


Shoreline cable. Continues hand rail system

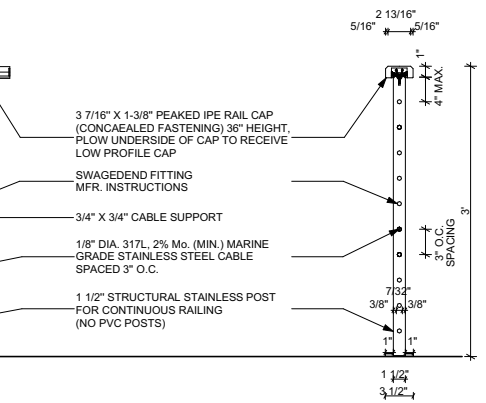


RAILING DETAIL- ELEVATION
SCALE 1/2" = 1'0"



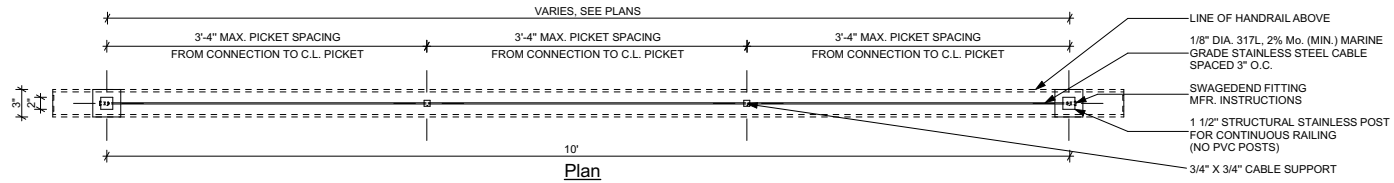
ELEVATION

RAILING DETAIL- SECTION
SCALE 1/2" = 1'0"



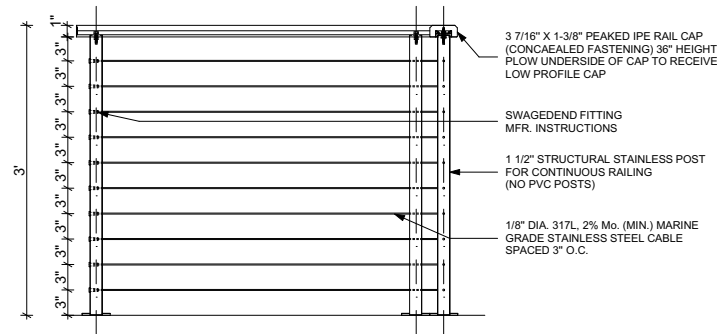
SECTION

RAILING DETAIL- PLAN
SCALE 1/2" = 1'0"

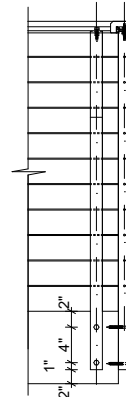


Plan

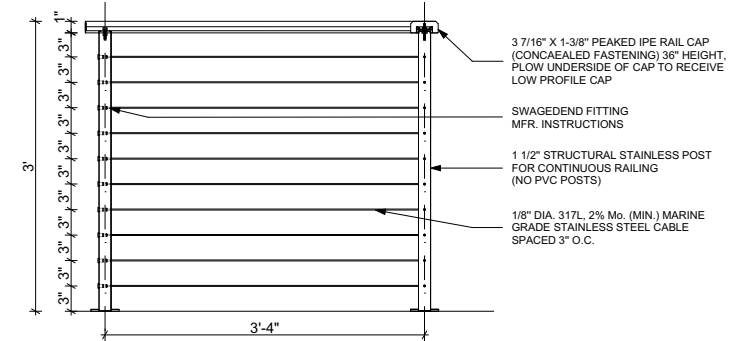
SINGLE POST 90° CORNER- ELEVATION. VARIATION 1
SCALE 1/2" = 1'0"



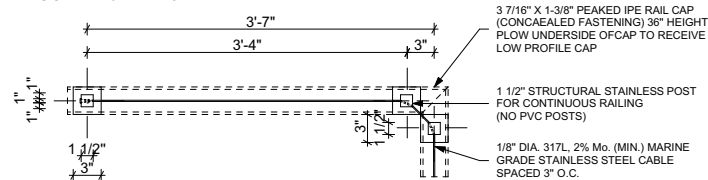
SINGLE POST 90° CORNER- ELEVATION. VARIATION 2



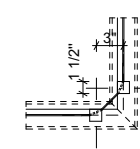
SINGLE POST 90° CORNER- ELEVATION. VARIATION 3
SCALE 1/2" = 1'0"



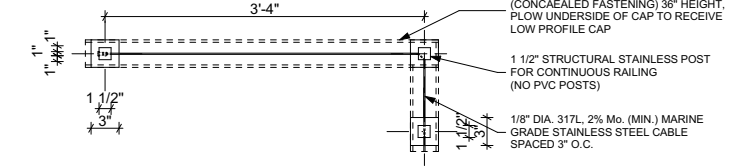
SINGLE POST 90° CORNER- PLAN. VARIATION 1
SCALE 1/2" = 1'0"



SINGLE POST 90° CORNER- PLAN. VARIATION 2
SCALE 1/2" = 1'0"



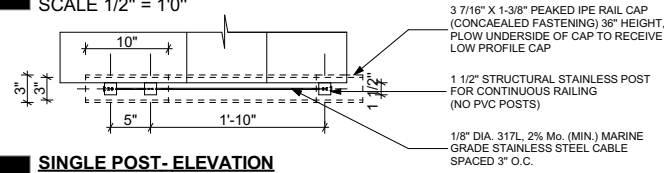
SINGLE POST 90° CORNER- PLAN. VARIATION 3
SCALE 1/2" = 1'0"



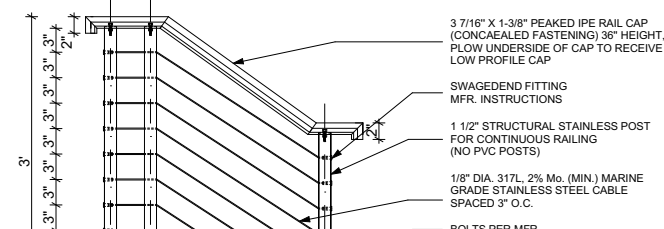
Shoreline cable. Continues hand rail system



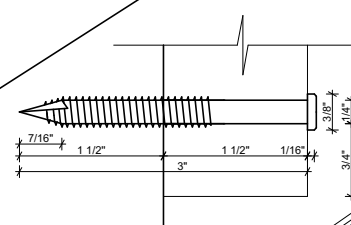
SINGLE POST- PLAN
SCALE 1/2" = 1'0"



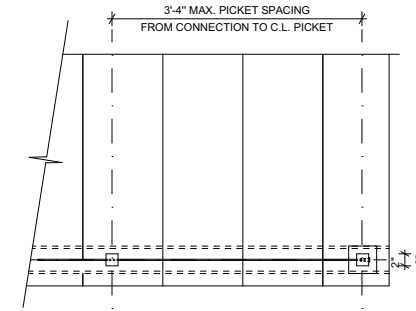
SINGLE POST- ELEVATION
SCALE 1/2" = 1'0"



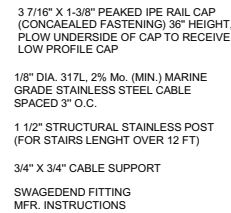
BOLTS PER MFR.
SCALE 6" = 1'0"



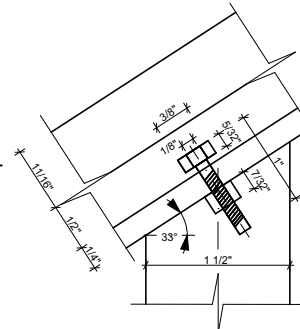
RAILING ON STAIRS- PLAN
SCALE 1/2" = 1'0"



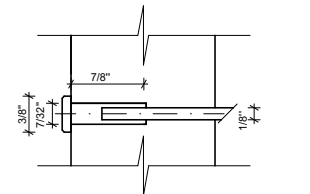
RAILING ON STAIRS- ELEVATION
SCALE 1/2" = 1'0"



FASTENING OF THE BOLT
SCALE 6" = 1'0"

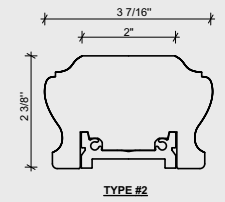
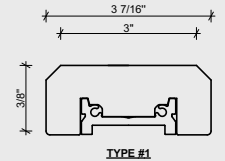


SWAGED END CABLE FITTING
SCALE 6" = 1'0"

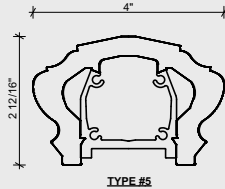
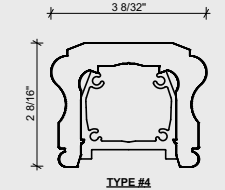
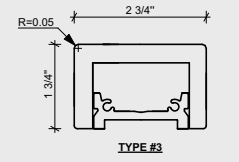


6 TYPES OF HAND RAIL
SCALE 3" = 1'0"

STOCK WOOD OPTIONS (CEDAR, MAHOGANY, IPE, TEAK, WHITE OAK)



PVC OPTIONS



ALUMINUM FLAT CAP OPTION

